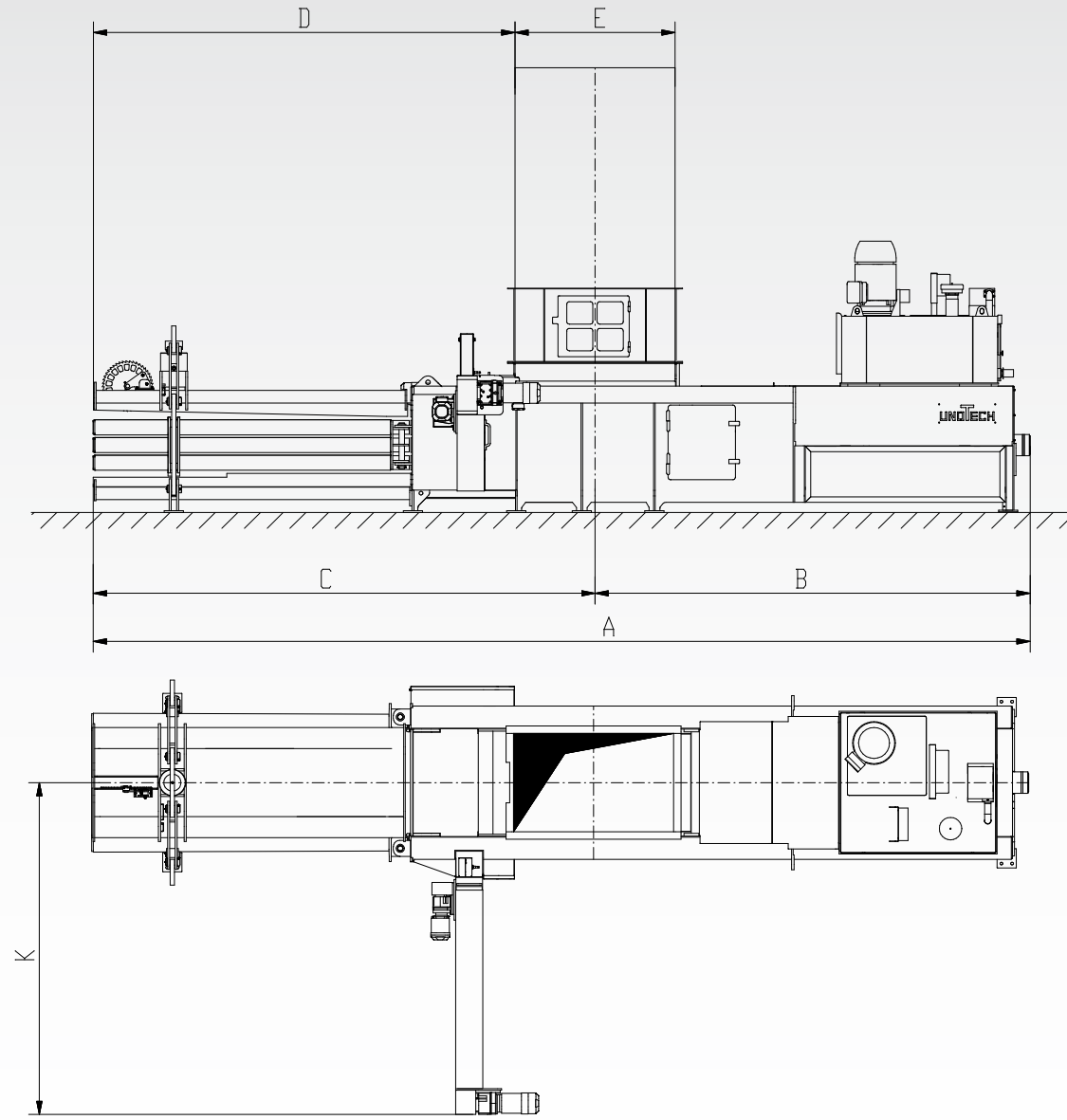
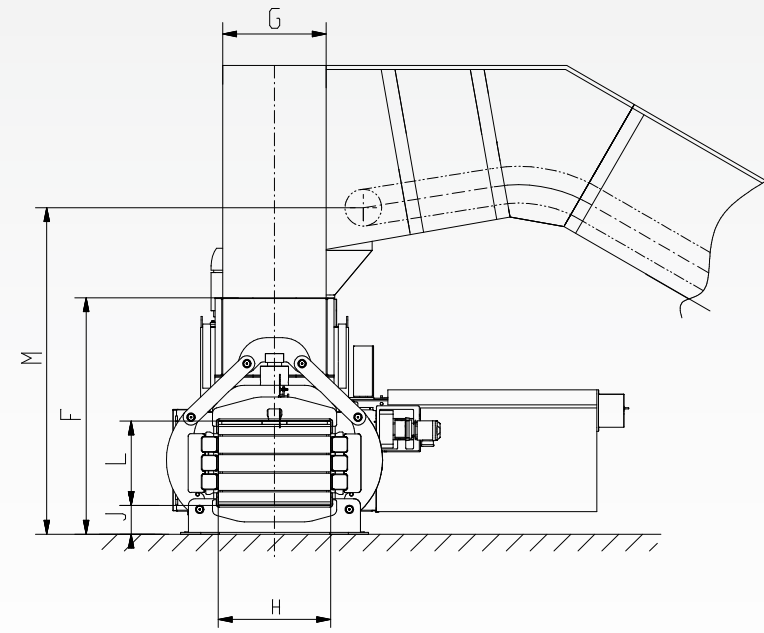


CHANNEL BALING PRESSES OF THE SERIES

UPAMAT®-H

SPECIFIED PURPOSE

- Cardboard manufacturer
- Shopping centres
- Manufacturer for corrugated cardboard
- Waste paper industry
- Printing shops
- Pulp and paper industry
- Distribution centres



TECHNICAL DATA

UPAMAT-H	60 H4	70 H4	80 H4	100 H4	130 H5	150 H5
Pressing force	630 kN	720 kN	800 kN	990 kN	1.200 kN	1.500 kN
Specific pressure	84 N/cm²	96 N/cm²	97 N/cm²	120 N/cm²	100 N/cm²	124 N/cm²
Hopper opening	1.250 x 920 mm	1.500 x 920 mm	1.600 x 1.020 mm	1.800 x 1.020 mm	2.000 x 1.020 mm	2.000 x 1.020 mm
Tunnel section (h x w)	750 x 1.000 mm	750 x 1.000 mm	750 x 1.100 mm	750 x 1.100 mm	1.100 x 1.100 mm	1.100 x 1.100 mm
Throughput*	1 x 22 kW - 1 x 30 kW - 1 x 45 kW	1 x 30 kW - 1 x 45 kW - 1 x 75 kW	1 x 30 kW - 1 x 45 kW - 1 x 75 kW	1 x 75 kW - 2 x 45 kW	1 x 75 kW - 2 x 45 kW - 2 x 55 kW	2 x 45 kW - 2 x 55 kW - 3 x 55 kW
20-30 kg/m³	3,9 t/h 4,9 t/h 8,1 t/h	5,1 t/h 8,7 t/h 12,3 t/h	4,2 t/h 6,8 t/h 10,0 t/h	7,5 t/h 10,5 t/h	12,0 t/h 16,5 t/h 17,5 t/h	15,0 t/h 16,0 t/h 22,0 t/h
35-50 kg/m³	6,0 t/h 7,6 t/h 12,2 t/h	7,8 t/h 13,2 t/h 18,5 t/h	7,0 t/h 10,5 t/h 15,5 t/h	12,5 t/h 17,5 t/h	20,0 t/h 26,0 t/h 29,0 t/h	24,0 t/h 26,0 t/h 37,0 t/h
60 kg/m³	6,6 t/h 8,4 t/h 14,0 t/h	8,5 t/h 14,5 t/h 20,5 t/h	7,5 t/h 11,5 t/h 18,0 t/h	13,5 t/h 19,0 t/h	24,0 t/h 28,5 t/h 31,0 t/h	27,0 t/h 29,0 t/h 43,0 t/h
100 kg/m³	9,5 t/h 12,0 t/h 20,0 t/h	12,5 t/h 21,0 t/h 30,0 t/h	11,5 t/h 18,0 t/h 26,5 t/h	20,0 t/h 28,0 t/h	32,0 t/h 40,0 t/h 43,0 t/h	39,0 t/h 44,0 t/h 58,0 t/h
Bale weight**	350 - 500 kg	370 - 600 kg	500 - 700 kg	500 - 800 kg	800 - 1000 kg	1.100 - 1.700 kg
Bale length	up to 1,80 m	up to 1,80 m	up to 2,00 m	up to 2,00 m	up to 2,00 m	up to 2,00 m
Total weight	approx. 13 t	approx. 14,5 t	approx. 24 t	approx. 28 t	approx. 39 t	approx. 53 t

* depending on input density and main drive

** depending on input density and bale length

subject to changes in design and dimensions!

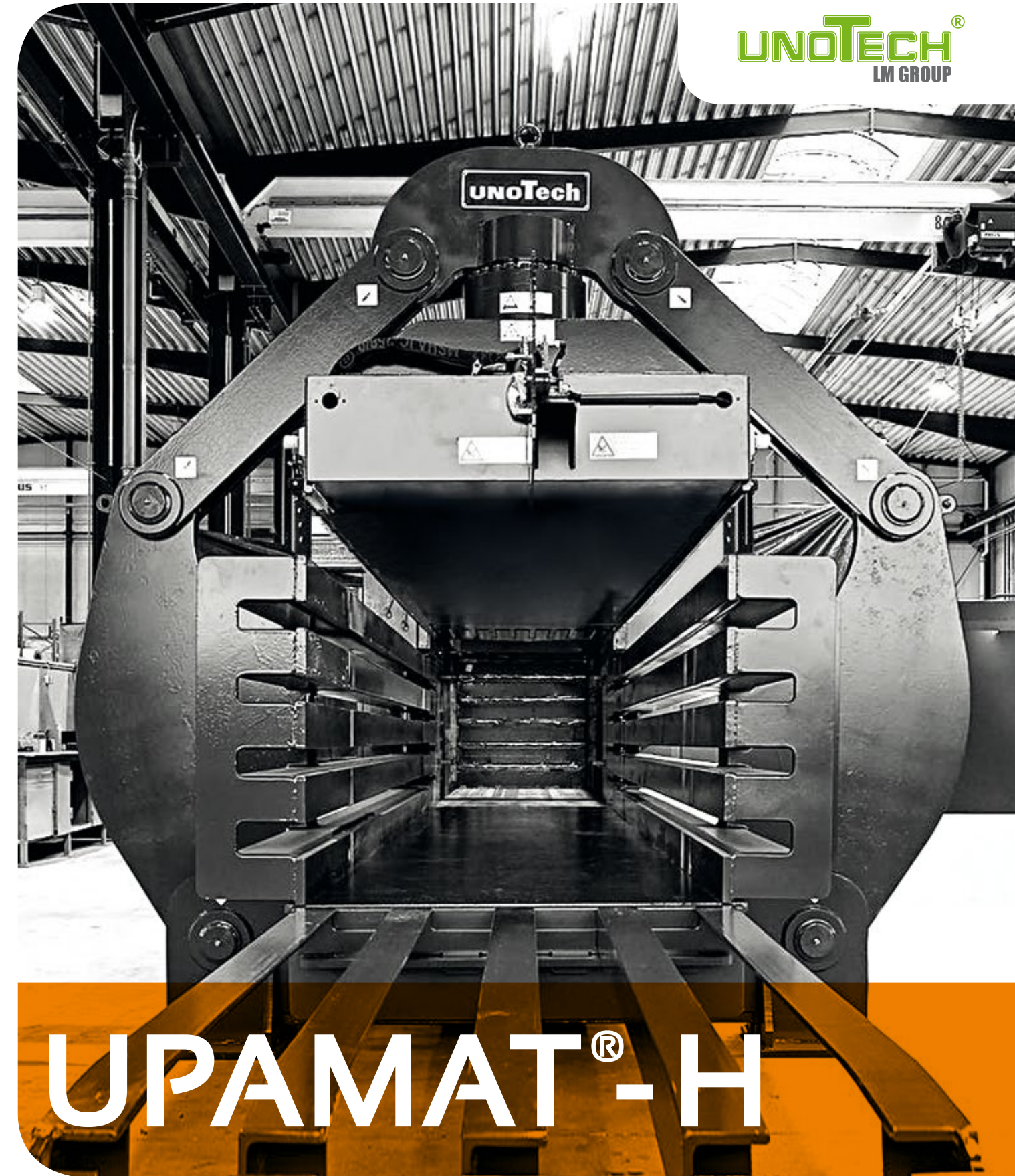
The table shows a selection of the possible drive powers. Other drive configurations possible.

DIMENSIONS	A	B	C	D	E	F	G	H	J	K	L	M
60 H	8.380	3.800	4.580	3.955	1.250	2.100	920	1.000	255	3.200	750	2.900
70 H	8.880	4.175	4.705	3.955	1.500	2.100	920	1.000	255	3.200	750	2.900
80 H	11.005	5.665	5.340	4.540	1.600	2.700	1.020	1.100	445	3.300	750	3.500
100 H	13.365	6.470	6.895	5.995	1.800	2.700	1.020	1.100	445	3.700	750	3.500
130 H	13.365	6.470	6.895	5.895	2.000	3.200	1.020	1.100	600	3.700	1.100	4.000
150 H	14.410	6.735	7.675	6.675	2.000	3.200	1.020	1.100	600	3.700	1.100	4.000

subject to changes in design and dimensions!



unoTech GmbH • Feldkoppel 17 • 49779 Niederlangen • Germany
Phone +49 5939 / 94 144 - 11 • Fax: +49 5939 / 94 144 - 30
info@unotech.de • www.unotech.de



UPAMAT®-H

Channel baling presses
with horizontal steel tying



1. MANIFOLD HYDRAULIC BLOCK

- Oversized hydraulic block made of forged steel for highest efficiency grade and minimum flow losses
- Shortest press plate cycle times without any closing shocks



2. POWER PACK

- Highly efficient robust baler main drive
- Alternatively with internal gear pumps or axial piston pumps
- Peak pressure 400 bar working pressure up to 310 bar
- Low pressure stage of gear pumps dedicated for multiple pressure in reference to the shut-off point. Peak pressure 350 bar
- Consideration of all basic legal information regarding water protection



3. PRESS CHANNEL

- Press channel made of heavy profiles and steel plates
- Fully machined pressbox floor including bolted wear plates
- Friction tunnel including tunnel clamp in static oversized design



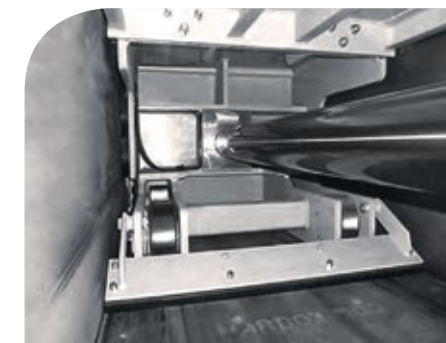
4. AUTOMATIC TYING

- Tying unit with extreme functional reliability and separated wire cut
- Suitable for wire thicknesses from 3,1 up to 4,1 mm
- Cost-optimised wire knot with adapted number of twists for reduced wire consumption
- Replacement of spares within shortest terms and without any special tool



5. PRESS PLATE

- Main cylinder with sufficient power reserve to achieve highest bale weights with all kind of material grades
- Heavy roller guiding as well as sliding guides for press plate
- Press plate available with fully automatic horizontal slot covers



6. STAMPER

- Clearance down force 25 to
- Stamper guiding rails with easy access to allow taking over heavy off-centre loads
- Directly mounted on top of the counter knife system of the baler
- Generously dimensioned hydraulic valve technology for shortest cycle times



7. OPERATOR PANEL

- Easy and safe user/operator guidance system as well as display of fault status and all states for operation and maintenance via touch panel
- All cable plugs fully encapsulated (IP 67), thus no water/moisture ingress possible



8. BALER SAFETY

- Modular baler safety system via key transfer system including the prevention of lock-in danger

