

TECHNICAL DATA

CHANNEL BALING
PRESS

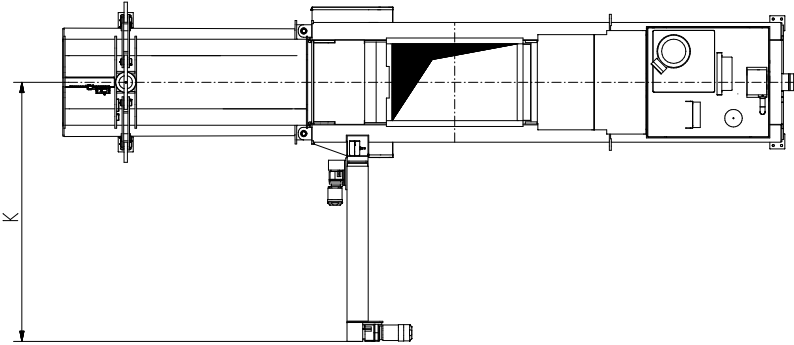
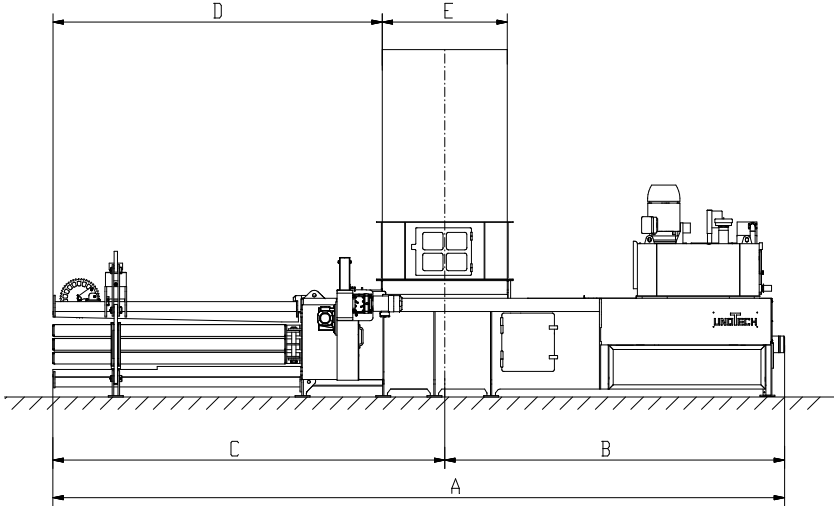
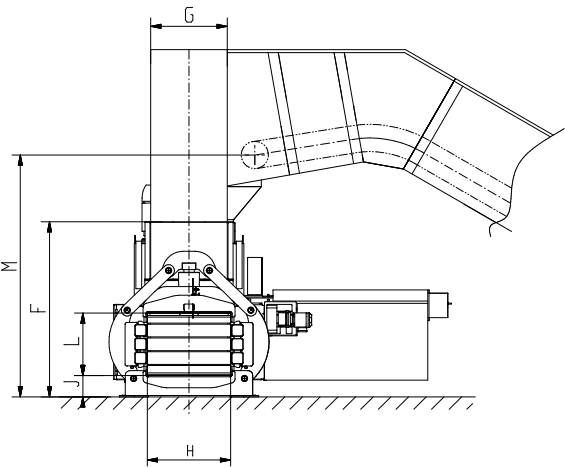
UPAMAT-H

UPAMAT-H	60 H 4	70 H 4	80 H 4	100 H 4	120 H 5	150 H 5
Pressing force	520 kN	600 kN	650 kN	800 kN	1.000 kN	1.300 kN
Max. cutting force	630 kN	720 kN	800 kN	990 kN	1.200 kN	1.500 kN
Specific pressing force	84 N/cm²	96 N/cm²	97 N/cm²	120 N/cm²	100 N/cm²	124 N/cm²
Feeding chute dimensions	1.250 x 920 mm	1.500 x 920 mm	1.600 x 1.020 mm	1.800 x 1.020 mm	2.000 x 1.020 mm	2.000 x 1.020 mm
Channel dimensions	750 x 1.000 mm	750 x 1.000 mm	750 x 1.100 mm	750 x 1.100 mm	1.100 x 1.100 mm	1.100 x 1.100 mm
Pump drive performance*	1 x 22 kW - 1 x 30 kW - 1 x 45 kW	1 x 30 kW - 1 x 45 kW - 1 x 75 kW	1 x 30 kW - 1 x 45 kW - 1 x 75 kW	1 x 75 kW - 2 x 45 kW	1 x 75 kW - 2 x 45 kW - 2 x 55 kW	2 x 45 kW - 2 x 55 kW - 3 x 55 kW
20-30 kg/m³	3,9 t/h 4,9 t/h 8,1 t/h	5,1 t/h 8,7 t/h 12,3 t/h	4,2 t/h 6,8 t/h 10,0 t/h	7,5 t/h 10,5 t/h	12,0 t/h 16,5 t/h 17,5 t/h	15,0 t/h 16,0 t/h 22,0 t/h
35-50 kg/m³	6,0 t/h 7,6 t/h 12,2 t/h	7,8 t/h 13,2 t/h 18,5 t/h	7,0 t/h 10,5 t/h 15,5 t/h	12,5 t/h 17,5 t/h	20,0 t/h 26,0 t/h 29,0 t/h	24,0 t/h 26,0 t/h 37,0 t/h
60 kg/m³	6,6 t/h 8,4 t/h 14,0 t/h	8,5 t/h 14,5 t/h 20,5 t/h	7,5 t/h 11,5 t/h 18,0 t/h	13,5 t/h 19,0 t/h	24,0 t/h 28,5 t/h 31,0 t/h	27,0 t/h 29,0 t/h 43,0 t/h
100 kg/m³	9,5 t/h 12,0 t/h 20,0 t/h	12,5 t/h 21,0 t/h 30,0 t/h	11,5 t/h 18,0 t/h 26,5 t/h	20,0 t/h 28,0 t/h	32,0 t/h 40,0 t/h 43,0 t/h	39,0 t/h 44,0 t/h 58,0 t/h
Bale weights**	350 - 500 kg	370 - 600 kg	500 - 700 kg	500 - 800 kg	800 - 1000 kg	1.100 - 1700 kg
Bale lengths	up to 1,80 m	up to 1,80 m	up to 2,00 m	up to 2,00 m	up to 2,00 m	up to 2,00 m
Baler weight	approx. 13 t	approx. 14,5 t	approx. 24 t	approx. 28 t	approx. 39 t	approx. 53 t

* in terms of bulk weight and drive rating

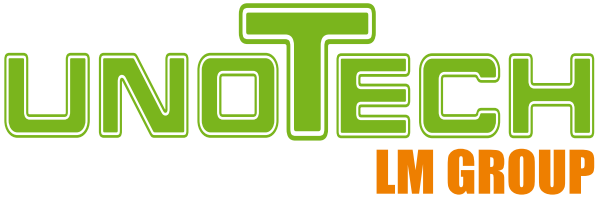
** dependent on bulk weight and bale length

Subject to changes in design and dimensions!



DIMENSIONS	A	B	C	D	E	F	G	H	J	K	L	M
60 H 4	8.287	3.713	4.574	3.949	1.250	2.100	920	1.000	255	3.166	750	2.900
70 H 4	8.787	4.088	4.699	3.949	1.500	2.100	920	1.000	255	3.166	750	2.900
80 H 4	10.745	5.409	5.336	4.536	1.600	2.700	1.020	1.100	385	3.257	750	3.500
100 H 4	11.772	5.836	5.936	5.036	1.800	2.700	1.020	1.100	385	3.257	750	3.500
120H5	13.500	6.800	6.700	5.700	2.000	3.200	1.020	1.100	600	3.700	1.100	4.000
150H5	13.500	6.800	6.700	5700	2.000	3.200	1.020	1.100	600	3.700	1.100	4.000

16.005 St 300.00



Space saving stockholding
Fast goods turnover
Reasonable-priced transport

RELIABILITY AND QUALITY
FOR MAXIMUM AVAILABILITY

unoTech GmbH
Feldropfel 17
49779 Niederlangen
Germany
Tel.: +49 (0) 5939 94 144 11
Fax: +49 (0) 5939 94 144 30
Info@unoTech.de
www.unoTech.de

CHANNEL BALING PRESSES SERIES
UPAMAT-H

CHANNEL BALING PRESSES SERIES UPAMAT-H



1. POWER PACK

- Hydraulic manifold block in forged construction attached to the oil tank for a minimum of flow losses and highest power efficiency
- Shortest pressing cycle times by significantly reduced down time in the reversal points of the press plate for a smooth operation



2. POWER PACK

- Energy efficient, robust power pack drive with internal gear pumps
- Peak pressure of the main pumps 400 bar; Operating pressure up to 310 bar
- Low pressure stage of gear pumps dedicated for multiple pressure in reference to the shut-off point. Maximum pressure min. 350 bar

3. PRESS CHANNEL

- Heavily structured press channel with fully machined press floor including wear resistant bolted wear plates
- Compacting tunnel adjustment in static oversized construction



4. TYING SYSTEM

- Fully automatic wire-cutting device
- Suitable for wire thicknesses of 3.1 – 4.1 mm
- New tying system designed to reduce wire consumption
- Replacement of machine spares within shortest terms without any special tools



5. PRESS PLATE

- Main cylinder with sufficient power reserve to achieve highest bale weights with all kind of material grades
- Press plate with oversized roller and sliding guides



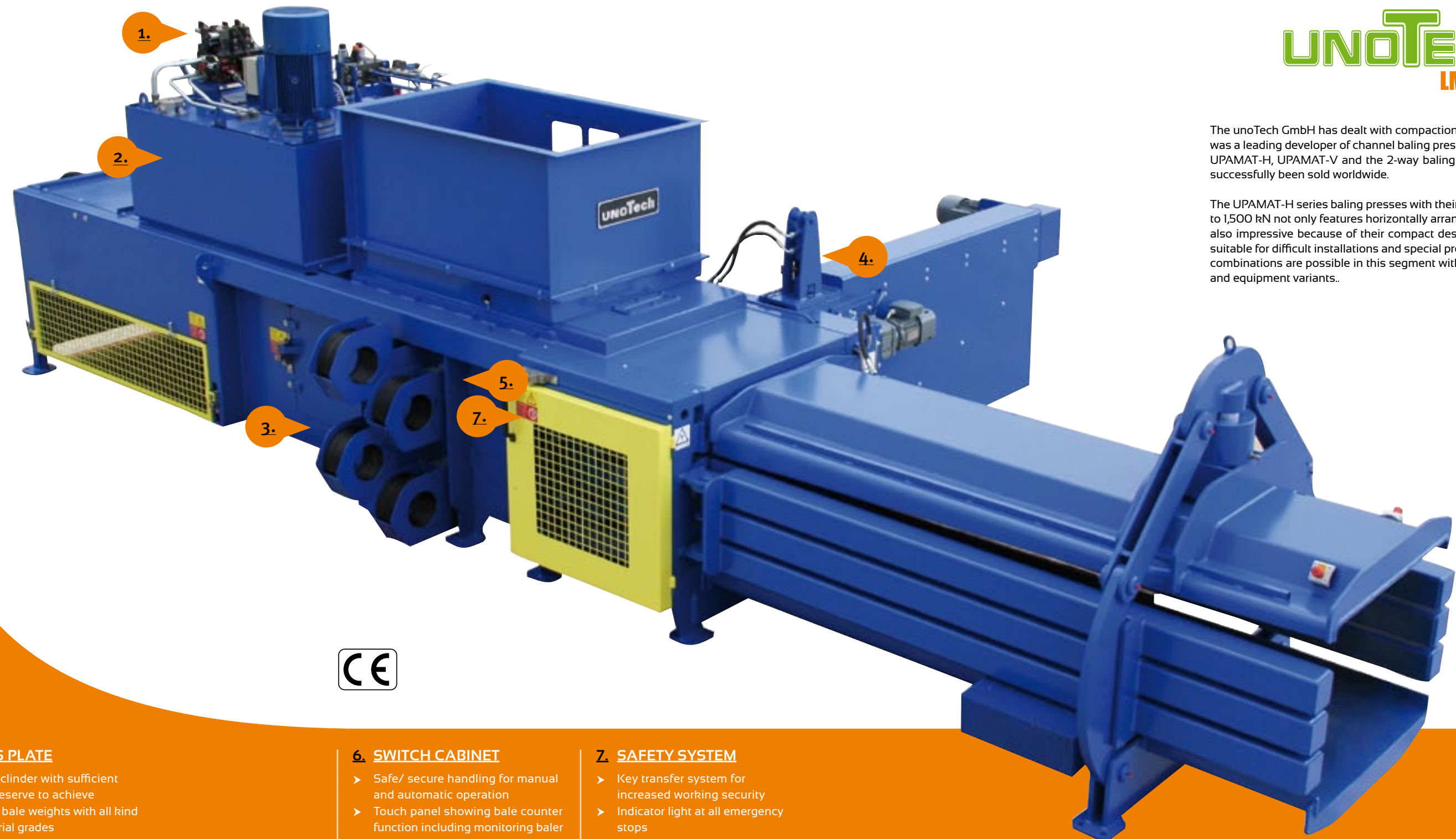
6. SWITCH CABINET

- Safe/ secure handling for manual and automatic operation
- Touch panel showing bale counter function including monitoring baler operation
- Fully enclosed valve connectors with highest type of protection class



7. SAFETY SYSTEM

- Key transfer system for increased working security
- Indicator light at all emergency stops
- Flash signal at triggered switch



UNOTech
LM GROUP

The unoTech GmbH has dealt with compaction for almost two decades and was a leading developer of channel baling presses series under the name of UPAMAT-H, UPAMAT-V and the 2-way baling press UPAMAX which have successfully been sold worldwide.

The UPAMAT-H series baling presses with their pressing force from 500 kN to 1,500 kN not only features horizontally arranged cording systems but are also impressive because of their compact design, making them especially suitable for difficult installations and special products to be pressed. A lot of combinations are possible in this segment with regard to their throughputs and equipment variants.

APPLICATIONS

- Data shredding
- Department stores
- Central warehouse
- Producer of corrugated cardboards
- Waste paper
- Print shops
- Paper mill
- Manufacturer of cardboards

